



Love Birds Popover

Designed by Lauren Riker for *skacel collection, Inc.*



SKILL LEVEL: Intermediate

SIZES: XS (S, M, L, XL) to fit 28" (30", 34", 42", 46") Bust

MATERIALS:

Featured Yarn: Hikoo® *Kenzie*, 50% New Zealand Merino, 25% Nylon, 10% Angora, 10% Alpaca, 5% Silk Noils; 160 yds / 50g; shown in #1015 (Boysenberry); uses 5 (5, 6, 6, 7) skeins.

addi® Needles:

4.0 mm (approx US 6) 16" and 32" circular needle

5.0 mm (approx US 8) 32" circular needle

6.5 mm (approx US 10.5) needle (to aid in loose bind off only)

3.75 mm crochet hook (for single crochet edge at keyhole only)

or size needed to obtain gauge

Additional Notions: Stitch markers, stitch holders, two (2) cable needles, tapestry needle

All yarn and needles distributed by skacel collection, Inc.

GAUGE: 18 sts and 26 rows = 10cm x 10cm (4" x 4") in St st

**To save time, check your gauge
and read all instructions thoroughly before beginning.**

DESIGNER'S NOTES:

- Sweater is worked in the round from the bottom up, to the sleeves, then the front and back are worked flat separately. The body of the sweater is worked in Stockinette Stitch, aside from bird chart.
- Chart is given to reflect the RS of the knitting; when sweater is worked back and forth for sleeves, the chart will need to be interpreted when working the WS.

INSTRUCTIONS:

Bottom Band:

With smaller 32" needle, CO 68 (76, 86, 94, 104) sts, PM for wearer's right side, CO 68 (76, 86, 94, 104) sts, PM for start and join, taking care not to twist sts = 136 (152, 172, 188, 208) sts.

Work in k2, p2 rib for 4".

BODY:

Change to larger needle and knit 2 (2, 4, 5, 7) rnds, then start Bird Chart over center front (first half of sts).

When work meas 7", inc for underarms as follows, working to last st on last rnd:

Rnd 1 (Inc Rnd): M1L, k1, SM, k1, M1R, knit to 1 st before marker, M1L, k1, SM, k1, M1R, knit to end = 140 (156, 176, 192, 212) sts.

Next Rnd: Knit.

Rep last 2 rnds 4 more times = 156 (172, 192, 208, 228) sts.

Place front sts on holder. Turn to work back sleeves flat.

Back Sleeves:

Inc for sleeves as follows every 10th row 4 times (8 sts inc total):

Inc Row (RS): K1, M1L, knit to last st, M1R, k1.

AT SAME TIME start keyhole when work meas 13.25" (13.75", 14", 14.25", 14.5") from beg, starting with a RS row:

Mark center of Back.

Row 1 (RS): Knit to 2 sts before center of back, k2tog; join 2nd ball and SSK, knit to end.

Row 2 (WS): Purl to last 2 sts before keyhole, SSP; p2tog, purl to end.

Row 3: Rep Row 1.

Cont to work both sides of back, working even at keyhole and after last sleeve inc until sleeves meas 6.5" (7", 7.25", 7.5", 7.75") ending after working a WS row = 40 (44, 49, 53, 58) sts on each side.

SHOULDERS:

Work shoulders separately, starting with the wearer's right shoulder:

Wearer's Right Shoulder:

Row 1 (RS): BO 2 (2, 3, 2, 3) sts, knit to end = 38 (42, 46, 51, 55) sts.

skacel collection, Inc.

Copyright© 2015 - All rights reserved.

www.skacelknitting.com

Row 2 (WS): Purl to last 2 sts, SSP = 37 (41, 45, 50, 54) sts.

Rep last 2 rows 3 (3, 3, 4, 4) more times = 28 (32, 33, 38, 38) sts.



Inc for Keyhole:

Row 1: BO 2 (2, 2, 3, 3) sts, knit to last St, M1L, k1 = 27 (31, 32, 36, 36) sts.

Row 2: P1, M1L, purl to last 2 sts, SSP = 27 (31, 32, 36, 36) sts.

Row 3: Rep Row 1 = 26 (30, 31, 34, 34) sts.

BO for Back Neck:

Row 1: BO until 11 (14, 14, 16, 15) sts rem, dec at shoulder edge as est = 10 (13, 13, 15, 14) sts.

Row 2: BO 1 (2, 2, 3, 3) sts, knit to last 2 sts, k2tog = 8 (10, 10, 11, 10) sts.

Row 3: P2tog, purl to last 2 sts, SSP = 6 (8, 8, 9, 8) sts.

Rep last 2 rows once more = 2 (3, 3, 3, 2) sts.

Row 6: K0 (1, 1, 1, 0), k2tog and BO last st.

Wearer's Left Shoulder:

Work even across RS.

Row 1 (WS): BO 2 (2, 3, 2, 3), purl to end = 38 (42, 46, 51, 55) sts.

Row 2 (RS): Knit to last 2 sts, k2tog = 37 (41, 45, 50, 54) sts.

Rep last 2 rows 3 (3, 3, 4, 4) more times = 28 (32, 33, 38, 38) sts.

Inc for Keyhole:

Row 1: BO 2 (2, 2, 3, 3) sts, purl to last St, M1R, p1 = 27 (31, 32, 36, 36) sts.

Row 2: K1, M1R, knit to last 2 sts, k2tog = 27 (31, 32, 36, 36) sts.

Row 3: Rep Row 1 = 26 (30, 31, 34, 34) sts.

BO for Back Neck:

Row 1: BO until 11 (14, 14, 16, 15) sts rem, dec at shoulder edge as est = 10 (13, 13, 15, 14) sts.

Row 2: BO 1 (2, 2, 3, 3) sts, purl to last 2 sts, SSP = 8 (10, 10, 11, 10) sts.

Row 3: SSK, knit to last 2 sts, k2tog = 6 (8, 8, 9, 8) sts.

Rep last 2 rows once more = 2 (3, 3, 3, 2) sts.

Row 6: P0 (1, 1, 1, 0), SSP and BO last st.

FRONT:

Work sleeve edge increases as for Back until work meas 14" (14.5", 14.75", 15", 15.25") from beg, ending after working a WS row, BO for neckline as follows:

Mark center 10 (12, 14, 14, 16) sts.

Knit to marked sts, join 2nd ball and BO marked sts, knit to end.

Next Row: Purl to 2 sts before BO edge, SSP; p2tog, purl to end.

Next Row: Knit to 2 sts before BO edge, k2tog; SSK, knit to end.

Cont to dec at each neckline edge every row for 13 (13, 13, 14, 14) more rows.

AT SAME TIME, when sleeves meas 6.5" (7", 7.25", 7.5", 7.75") end after working a WS row, and work shoulders separately as follows:

Wearer's Left Shoulder:

Row 1 (RS): BO 2 (2, 3, 3, 3) sts, knit to end.

Row 2 (WS): Purl to last 2 sts, SSP.

Rep last 2 rows 3 more times - 12 (12, 16, 16, 16) sts dec.

Row 9: BO 1 (2, 2, 2, 3) sts, knit to end.

Row 10: Rep Row 2.

Rep last 2 rows 3 (3, 3, 4, 4) more times - 8 (12, 12, 15, 20) sts dec.

BO rem sts.

Wearer's Right Shoulder:

Work across RS.

Row 1 (WS): BO 2 (2, 3, 3, 3) sts, purl to end.

Row 2 (RS): Knit to last 2 sts, k2tog

Rep last 2 rows 3 more times - 12 (12, 16, 16, 16) sts dec.

Row 9: BO 1 (2, 2, 2, 3) sts, purl to end.

Row 10: Rep Row 2.

Rep last 2 rows 3 (3, 3, 4, 4) more times - 8 (12, 12, 15, 20) sts dec.

BO rem sts.

Seam shoulders tog.

Arm bands:

With 16" circular needle and starting at underarm with RS facing, PUK 68 (72, 72, 76, 80) sts (approx 3 sts for every 4 rows, ensuring you have a multiple of 4), PM and join, taking care not to twist sts.

Work in k2, p2 rib for 11 rnds.

Bind off all sts.

COWL NECK:

Note: Leave a 60" tail before picking up sts for the cowl to be used for a round of single crochet at the keyhole when finishing.

With 16" circular needle and starting at wearer's left Back neck with RS facing, PUK 91 (97, 105, 111, 119) sts around neckline, ensuring an odd number of sts, PM and join, taking care not to twist sts.

Work in Seed St until cowl meas 6" (6", 6", 6.5", 6.5") or to desired length. BO with largest needle.

Finishing:

Work a round of single crochet at the keyhole.

Weave in all ends. Wet block to finished measurements.

skacel collection, Inc.

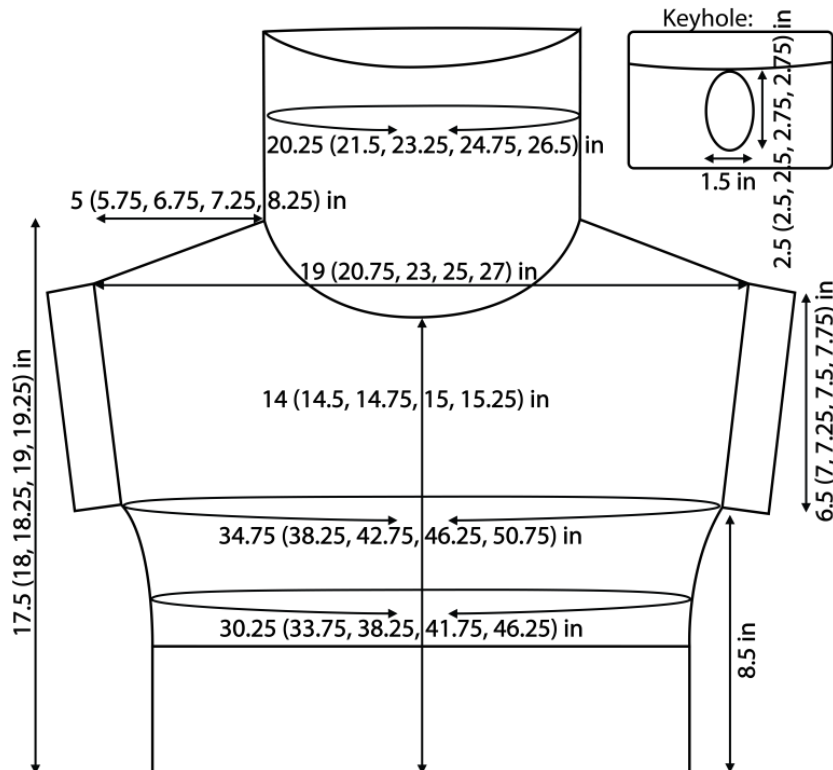
Copyright© 2015 - All rights reserved.

www.skacelknitting.com

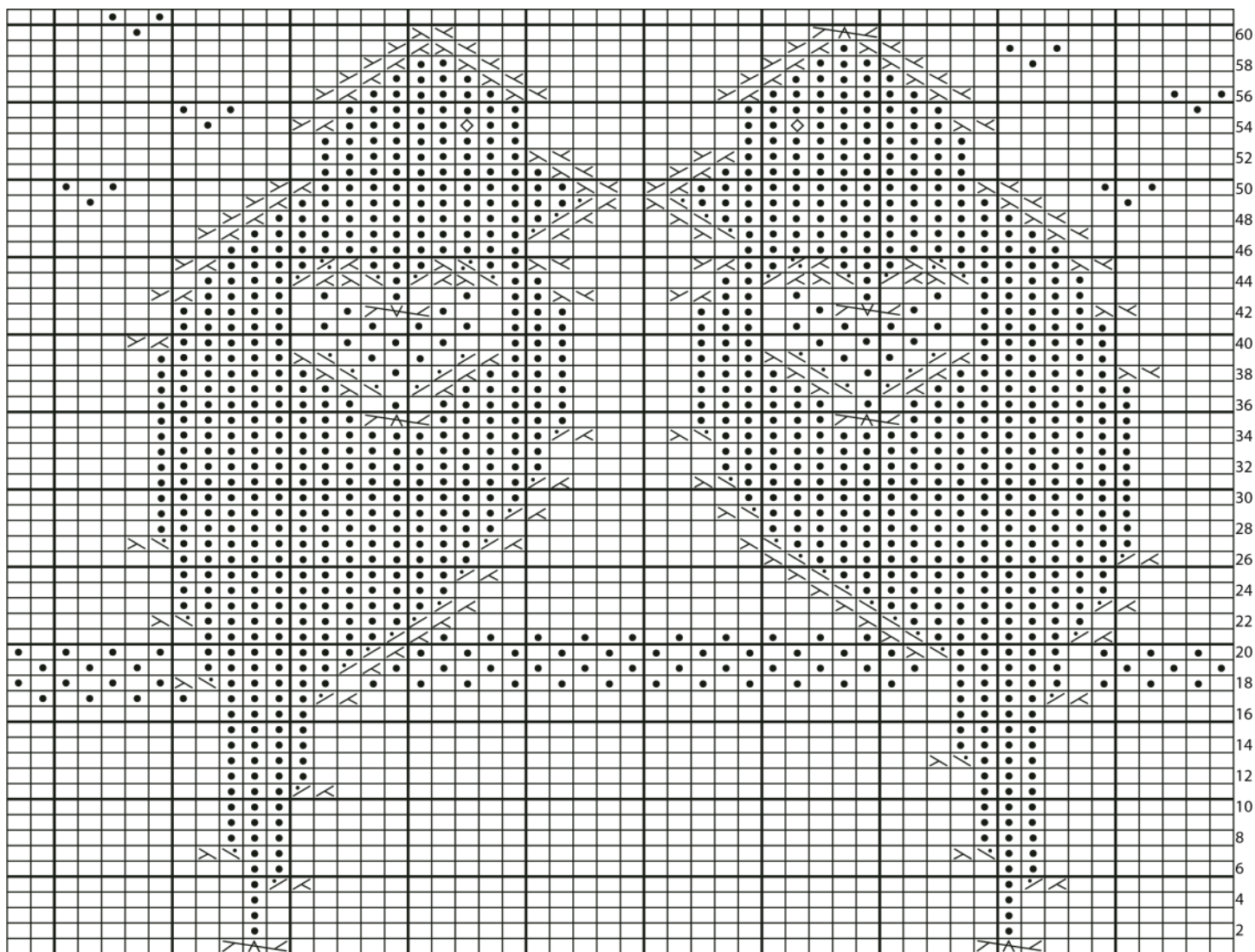
ABBREVIATIONS:

approx	approximate(ly)
beg	begin(ning)
BO	Bind Off
CO	Cast On
cm	centimeter
dec	decrease(s) / decreasing
est	established
g	grams
inc	increase(s) / increasing
k	knit
k2tog	knit two together
meas	measures
M1L	Make one Left: Using Left Hand needle, pick up bar between stitches on needles from front to back and using Right Hand needle, knit one stitch through the back loop (increases 1 stitch).
M1R	Make one Right: Using Left Hand needle, pick up bar between stitches on needles from Back to Front and using Right Hand needle, knit one stitch through the front loop (increases 1 stitch).

mm	millimeter
p2tog	purl two together
PM	place marker
PUK	Pick Up and Knit
rnd(s)	round(s)
RS	Right Side
SM	slip marker
SSK	slip, slip, knit: Slip 2 stitches knitwise, one at a time, from the left needle to the right needle, then insert the left needle into the front of the slipped stitches and knit them together (decreases 1 stitch).
SSP	slip, slip, purl: Slip 2 stitches knitwise, one at a time, from the left needle to the right needle, then return both stitches to left needle and purl both together through the back loop.
St st	Stockinette Stitch
st(s)	stitch(es)
wyib	with yarn in back
wyif	with yarn in front
WS	Wrong Side
yds	yards

Love Birds Schematic**skacel collection, Inc.**Copyright © 2015 - All rights reserved.
www.skacelknitting.com

Love Birds Chart



□ = Knit

● = Purl

◇ = Bobble: (k1, k1-b, k1) in next stitch, then pass 2nd and 3rd stitches separately over the first stitch on right needle

⊠ = Slip 1 st to cn and hold in back; k1, k1 from cn

⊡ = Slip 1 st to cn and hold in front; k1, k1 from cn

⊣ = Slip 1 st to cn and hold in back; k1, p1 from cn

⊤ = Slip 1 st to cn and hold in front; p1, k1 from cn

⊠⊡ = Slip 1 st to cn and hold in back; p1, p1 from cn

⊡⊠ = Slip 1 st to cn and hold in front; p1, p1 from cn

⊠⊡⊠ = Slip next 3 sts to cn and hold to front of work, slip second stitch to second cn and hold to back of work, knit third stitch, then second stitch from back cn, then first stitch from front cn

⊠⊡⊡ = Slip next 3 sts to cn and hold to front of work, slip second stitch to second cn and hold to back of work, knit third stitch, then purl second stitch from back cn, then knit first stitch from front cn

skacel collection, Inc.

Copyright © 2015 - All rights reserved.

www.skacelknitting.com