



skacel

Retro Mittens

Designed by Megan Peters for Skacel Collection, Inc.

These mittens are totally reversible, and the charts are interchangeable as either back of the hand or palm of the hand.

SKILL LEVEL:

SIZE and MATERIALS:

One Size: Adult Large

Featured Yarn: HiKoo® *Simpliworsted*, 55% Merino Superwash, 28% Acrylic, and 17% Nylon; 140 yds / 100 g. Shown in #037 (Gun Metal Grey) and #053 (Cabernet).

addi® Needles & Notions:

3.25 mm (approx US 3) circular or double point needles

3.5 mm (approx US 4) circular or double point needles

or size needed to obtain gauge.

Tapestry needle

All yarn and needles distributed by skacel collection, Inc.

GAUGE: 24 sts and 22 rows = 4" x 4" in Check Pattern

To save time, check your gauge and read all instructions thoroughly before beginning.

INSTRUCTIONS:

With smaller size needles, cast on 3 sts and work I-Cord for 47 rows, bind off 2 sts, turn.

Switch to larger needles and pick up 47 sts along the side of the I-Cord. Join into a round with the first stitch of the I-Cord = 48 sts. Knit one round.

Back/Palm of Hand:

Work Chart A over first 24 sts, then work Chart B over last 24 sts.

At Row 17, begin working Thumb Gusset Chart where indicated on Chart A or B.

On Row 31, slip 19 gusset sts to holder.

Cast on 1 stitch over gusset hole, and work through Row 57 of charts.

Cut yarn and use tapestry needle to thread yarn through live sts. Pull tight and weave in yarn tail.



Thumb:

Transfer 19 gusset sts on hold back to needles, PU 5 sts over gusset and work Thumb Chart.

FINISHING:

Cut yarn and use tapestry needle to thread yarn through live sts. Pull tight and weave in yarn tail.

ABBREVIATIONS:

approx approximate(ly)

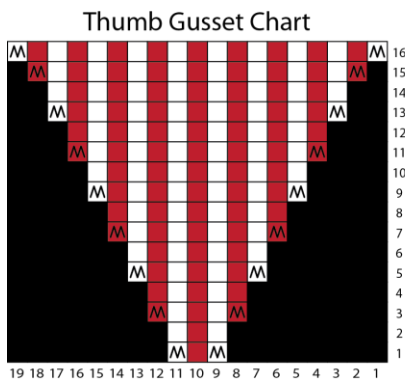
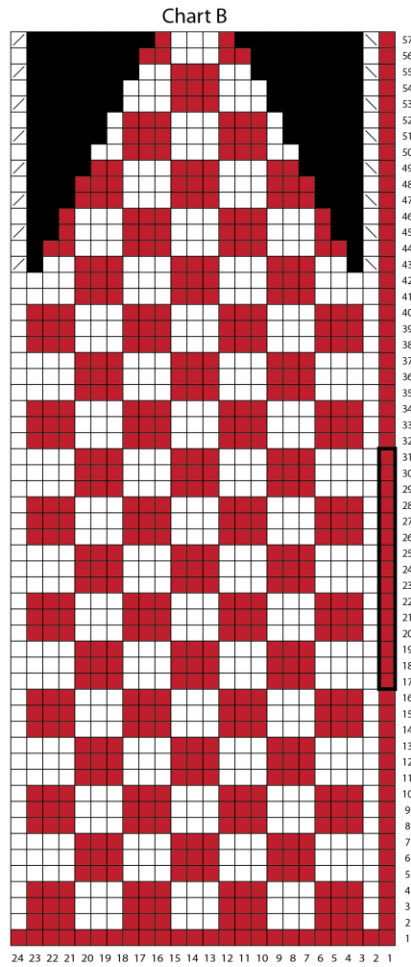
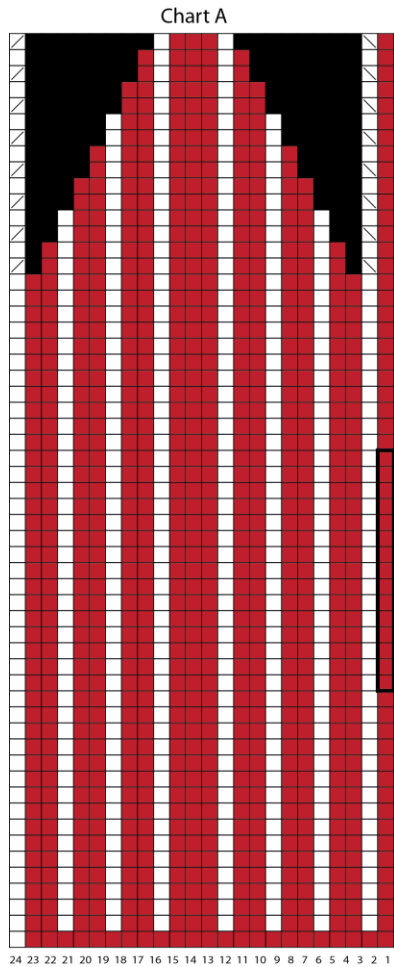
k2tog knit two stitches together as one

SSK slip 2 stitches, one at a time as if to knit, knit 1 stitch, then pass the slipped stitches over the knit stitch

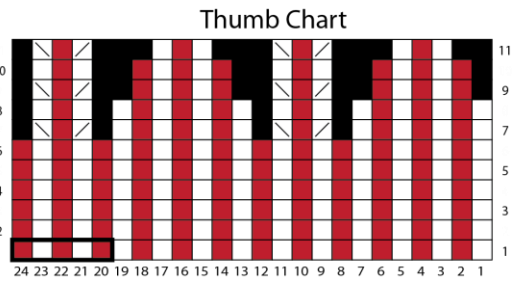
st(s) stitch(es)

skacel collection, Inc.

Copyright© 2015 - All rights reserved.
www.skacelknitting.com



Legend: Knit (in the round, or RS) K2 Tog Make 1
 RS: Knit; WS: Purl SSK No Stitch



skacel collection, Inc.

Copyright © 2015 - All rights reserved.
www.skacelknitting.com