



skacel

# Castille Cowl

Designer: Kyle Kunnecke



## Finished Size

34½" circumference x 7" high, after blocking

## Featured Yarn

**MC: Simplicity** by HiKoo®, 55% Merino Superwash, 28% Acrylic, 17% Nylon; 117 yards (107 meters) / 50g hank. 2 hanks. *Shown in - #028 Dark Teal.*

**CC: SimpliAir** by HiKoo®, 81% Alpaca, 19% Nylon; 220 yards (201 meters) / 25g ball. 1 ball. *Shown in - #1800 Breath.*

*Note: CC is held double throughout. Use both ends of yarn (inside and outside ball) at the same time.*

## Addi® Needles & Notions

3.5mm (approx. US 4) 24" circular needle  
or size needed to obtain gauge  
Stitch marker, tapestry needle, measuring tape.

## Gauge

28 sts & 30 rounds = 4" in Stranded Pattern.

To save time, check your gauge and read all instructions thoroughly before beginning.

*skacel collection, inc*

Copyright© 2018 - All Rights Reserved  
[www.skacelknitting.com](http://www.skacelknitting.com)

#21100744

## INSTRUCTIONS

With **MC**, use German twisted cast on to CO 210 sts. Join to work in the round, being careful not to twist. **PM** to indicate beg of round.

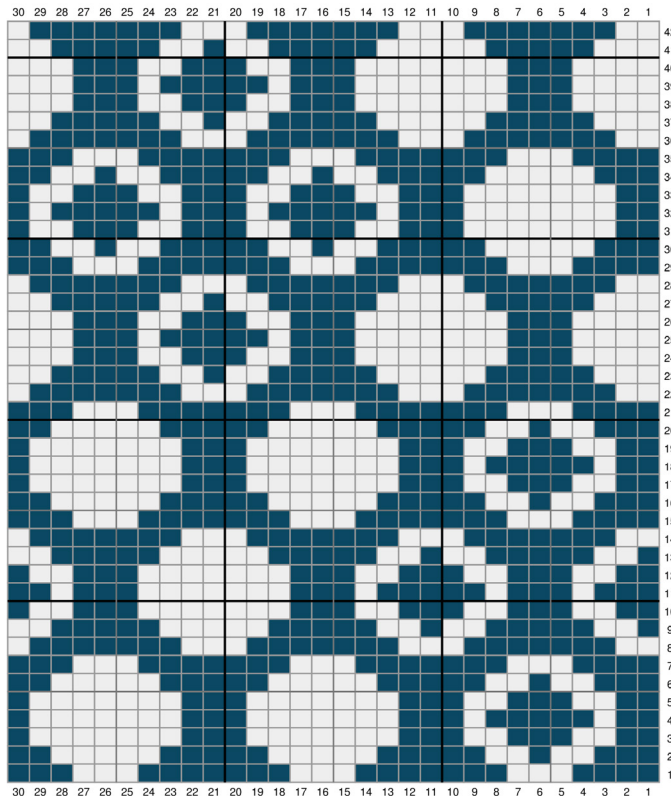
**Round 1:** \*K1, p1; rep from \* to EOR

**Round 2:** K to EOR

Repeat these 2 rounds a total of 3 times

### BEGIN CHART:

Reading from right to left, and repeating a total of 7 times around work on each round, complete chart. Join **CC** where indicated. Be sure to keep yarns in the same order throughout the project.



Cut **CC**. Complete work with **MC** as follows:

**Round 43:** \*K1, p1; rep from \* to EOR

**Round 44:** K to EOR

Repeat these 2 rounds a total of 3 times

Bind off loosely in pattern.

### Finishing

Cut yarns, leaving 6" tails. With tapestry needle, carefully weave in ends. Trim tails to 1". Soak in a cool bath with a little wool wash, roll in a towel to remove excess moisture (do not wring). Shape flat and allow to dry. Trim yarn tails after blocking.

**NOTE: ALWAYS TEST FOR COLORFASTNESS ON A SWATCH BEFORE WET BLOCKING.**

### Abbreviations

|         |                    |
|---------|--------------------|
| Approx: | Approximate        |
| BO      | Bind Off           |
| CC:     | Contrasting Color  |
| CO:     | Cast On            |
| EOR:    | End of Round       |
| K:      | Knit               |
| MC:     | Main Color         |
| P:      | Purl               |
| PM:     | Place Marker       |
| Rep:    | Repeat             |
| St(s):  | Stitch(es)         |
| wyib    | With Yarn In Back  |
| wyif    | With Yarn In Front |

