



skacel

Ethereal Wrap

Designed by Evelyn A Clark



SKILL LEVEL:

SIZE and MATERIALS:

Approximate Size (after blocking): 22" wide x 80" long

Featured Yarns:

Schoppel Lace Ball 100; 100% Virgin Superwash Wool; 875 yds / 100g ball; one (1) ball.

Zitron Traum Seide; 100% Mulberry Silk; 875 yds / 100g hank; one (1) hank.

addi Needles and Notions:

3.5mm (approx US size 4) straight or circular needles

or size to obtain gauge

Removable stitch marker; tapestry needle; stainless steel blocking pins, (*optional:* blocking wires)

All yarn and needles distributed by **skacel collection, inc.**

GAUGE (Unblocked): 20 sts = 4" (10cm) in garter stitch

Note on yarn usage: Because gauge can vary (especially in rows), it is important to ensure that there is enough yarn in the single ball to finish the project. Here's a tip to get the most efficient use of the yarn.... Before beginning, weigh the ball of yarn, and weigh it again after working the Beginning Border. Subtract the second weight from the first to determine how much was used for the Beginning Border. This this same amount must be reserved in order to have enough to finish the Ending Border.

Notes on construction: 1) It is helpful to hang a removable stitch marker along the side edge to mark the beginning of odd numbered rows. 2) Slip the first stitch of every row purlwise with yarn at front of work. 3) Lace will grow approximately 1/3 longer when blocked, so stretch the piece when measuring the length. 4) Lace can be knit from written instructions or charts.

To save time, check your gauge and read all instructions thoroughly before beginning.

skacel collection, Inc.

Copyright © 2015 - All rights reserved.
www.skacelknitting.com

#21100157

10/19/15

INSTRUCTIONS:

Beginning Border:

Loosely CO 83 sts.

Rows 1 - 4: Sl1, knit to end of row.

Row 5 (RS): Sl1, k1, *k2tog, yo; rep from * to last 3 sts, k3.

Row 6 (and all WS rows): Sl1, knit to end of row.

Row 7: Sl1, knit to end of row.

Row 9: Sl1, k1, k2tog, yo, knit to last 4 sts, yo, SSK, k2.

Row 11: Sl1, k6, (k2tog, yo, k1, yo, SSK, k3) 9 times, k4.

Row 13: Sl1, k1, k2tog, yo, k2, (k2tog, yo, k3, yo, SSK, k1) 9 times, k1, yo, SSK, k2.

Row 15: Sl1, k4, k2tog, yo, k2tog, yo, k1, (yo, SSK, yo, SK2P, yo, k2tog, yo, k1) 8 times, yo, SSK, yo, SSK, k5.

Row 17: Sl1, k1, k2tog, yo, k2, (k2tog, yo, k3, yo, SSK, k1) 9 times, k1, yo, SSK, k2.

Row 19: Sl1, k5, (yo, SSK, yo, SK2P, yo, k2tog, yo, k1) 9 times, k5.

Row 21: Sl1, k1, k2tog, yo, k3, (yo, SSK, k1, k2tog, yo, k3) 9 times, yo, SSK, k2.

Row 23: Sl1, k7, (yo, SK2P, yo, k5) 9 times, k3.

Row 25: Sl1, k1, k2tog, yo, knit to last 4 sts, yo, SSK, k2.

Row 27: Sl1, k6, k2tog, yo, k1, yo, SSK, k5, k2tog, yo, k1, yo, SSK, k7.

Row 29: Sl1, k1, k2tog, yo, k2, k2tog, yo, k3, yo, SSK, k1, (k2tog, yo) 27 times, k2, k2tog, yo, k3, yo, SSK, k2, yo, SSK, k2.

Row 31: Sl1, k4, k2tog, yo, k2tog, yo, k1, yo, SSK, yo, SSK, k5, k2tog, yo, k2tog, yo, k1, yo, SSK, yo, SSK, k5.

Row 33: Sl1, k1, k2tog, yo, k2, k2tog, yo, k3, yo, SSK, k1, k2tog, yo, k5, yo, SSK, k1, k2tog, yo, k3, yo, SSK, k2, yo, SSK, k2.

Center Section:

Row 35: Sl1, k5, yo, SSK, yo, SK2P, yo, k2tog, yo, k5, k2tog, yo, k1, (yo, SSK, k1, k2tog, yo, k1) 7 times, yo, SSK, k5, yo, SSK, yo, SK2P, yo, k2tog, yo, k6.

Row 37: Sl1, k1, k2tog, yo, k3, yo, SSK, k1, k2tog, yo, k2, k2tog, yo, k1, k2tog, yo, k2, (k1, yo, SK2P, yo, k2) 7 times, k1, yo, SSK, k1, yo, SSK, k2, yo, SSK, k1, k2tog, yo, k3, yo, SSK, k2.

Row 39: Sl1, k7, yo, SK2P, yo, k8, yo, SK2P, (yo, k3, yo, SK2P) 7 times, yo, k8, yo, SK2P, yo, k8.

Row 41: Sl1, k1, k2tog, yo, k10, k2tog, yo, k5, yo, SSK, k10, yo, SSK, k2.

Row 43: Sl1, k6, k2tog, yo, k1, yo, SSK, k6, k2tog, yo, k1, (yo, SSK, k1, k2tog, yo, k1) 7 times, yo, SSK, k6, k2tog, yo, k1, yo, SSK, k7.



Row 45: Sl1, k1, k2tog, yo, k2, k2tog, yo, k3, yo, SSK, k1, k2tog, yo, k1, k2tog, yo, k2, (k1, yo, SK2P, yo, k2) 7 times, k1, yo, SSK, k1, yo, SSK, k1, k2tog, yo, k3, yo, SSK, k2, yo, SSK, k2.

Row 47: Sl1, k4, k2tog, yo, k2tog, yo, k1, yo, SSK, yo, SSK, k5, yo, SK2P, (yo, k3, yo, SK2P) 7 times, yo, k5, k2tog, yo, k2tog, yo, k1, yo, SSK, yo, SSK, k5.

Row 49: Sl1, k1, k2tog, yo, k2, k2tog, yo, k3, yo, SSK, k1, k2tog, yo, k5, yo, SSK, k1, k2tog, yo, k3, yo, SSK, k2, yo, SSK, k2.

Work Rows 35 - 50 a total of 30 times, or to desired length (see **Note on yarn usage**, above). Each rep should measure approximately 1.75" after blocking.

Ending Border:

Row 1: Sl1, k5, yo, SSK, yo, SK2P, yo, k2tog, yo, k5, yo, SSK, yo, SK2P, yo, k2tog, yo, k6.

Row 3: Sl1, k1, k2tog, yo, k3, yo, SSK, k1, k2tog, yo, k2, (k2tog, yo) 27 times, k3, yo, SSK, k1, k2tog, yo, k3, yo, SSK, k2.

Row 5: Sl1, k7, yo, SK2P, yo, k6, yo, SK2P, yo, k8.

Row 7: Sl1, k1, k2tog, yo, knit to last 4 sts, yo, SSK, k2

Row 9: Sl1, k6, (k2tog, yo, k1, yo, SSK, k3) 9 times, k4.

Row 11: Sl1, k1, k2tog, yo, k2, (k2tog, yo, k3, yo, SSK, k1) 9 times, k1, yo, SSK, k2.

Row 13: Sl1, k4, k2tog, yo, k2tog, yo, k1, (yo, SSK, yo, SK2P, yo, k2tog, yo, k1) 8 times, yo, SSK, yo, SSK, k5.

Row 15: Sl1, k1, k2tog, yo, k2, (k2tog, yo, k3, yo, SSK, k1) 9 times, k1, yo, SSK, k2.

Row 17: Sl1, k5, (yo, SSK, yo, SK2P, yo, k2tog, yo, k1) 9 times, k5.

Row 19: Sl1, k1, k2tog, yo, k3, (yo, SSK, k1, k2tog, yo, k3) 9 times, yo, SSK, k2.

Row 21: Sl1, k7, (yo, SK2P, yo, k5) 9 times, k3.

Row 23: Sl1, k1, k2tog, yo, knit to last 4 sts, yo, SSK, k2.

Row 25: Sl1, knit to end of row.

Row 27: Sl1, k1, *k2tog, yo; rep from * to last 3 sts, k3.

Rows 29 & 31: Sl1, knit to end of row.

Row 32: Loosely cast off in knit.

FINISHING: Weave in yarn ends and trim after blocking.

Blocking: Soak piece at least 20 minutes in lukewarm water. Roll in a towel and blot out excess water. If using blocking wires, run through slipped sts on sides. Smooth into shape on a flat surface and pin. Leave in place until thoroughly dry.

ABBREVIATIONS:

approx	approximate(ly)
BO	Bind Off
CO	Cast On
k	knit
k2tog	knit two stitches together as one
meas	measures
p	purl
p2tog	purl two stitches together as one
PM	Place Marker
PUK	Pick Up and Knit
rep	repeat
RS	Right Side
st(s)	stitch(es)
WS	Wrong Side
YO	Yarn Over
sl	slip (unless otherwise stated, slip as if to purl)
SSK	Slip 2 stitches knit wise, one at a time, from the left needle to the right needle, then insert the left needle into the front of the slipped stitches and knit them together.
SK2P	Slip 1 stitch knit wise, Knit 2 stitches together, Pass slipped stitch over stitches just knitted



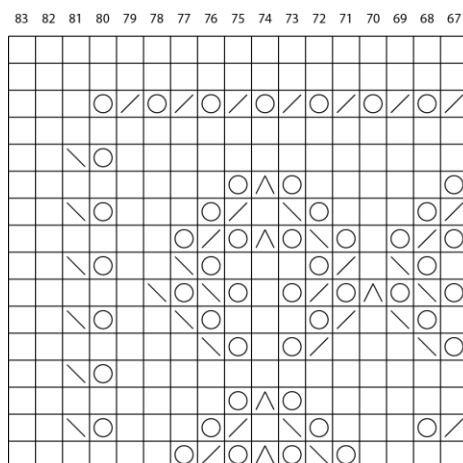
Lace Ball 100 colors shown (L to R): #2179, #2247, and #2170

skacel collection, Inc.

Copyright © 2015 - All rights reserved.
www.skacelknitting.com

Lace Charts

Chart 3 - Ending Border:



6 stitch repeat

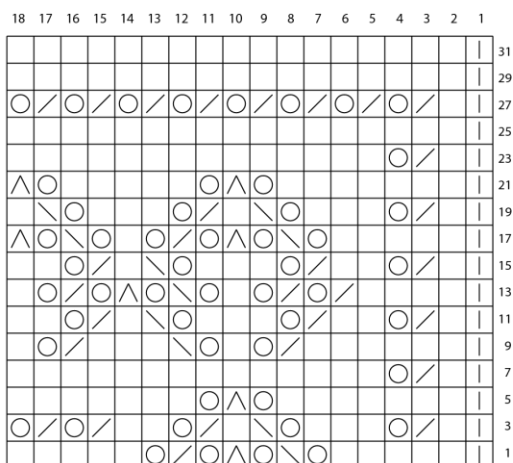
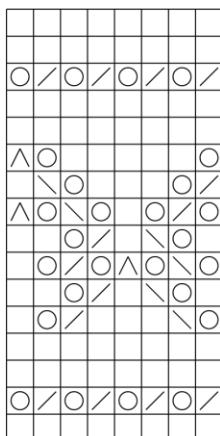
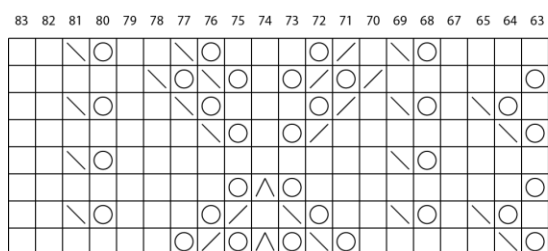


Chart 2 - Center Body & Borders:



6 stitch repeat

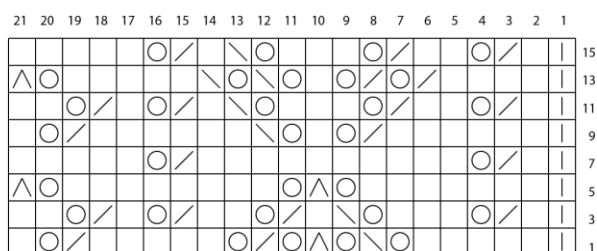
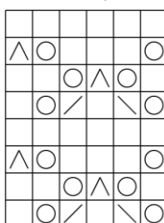
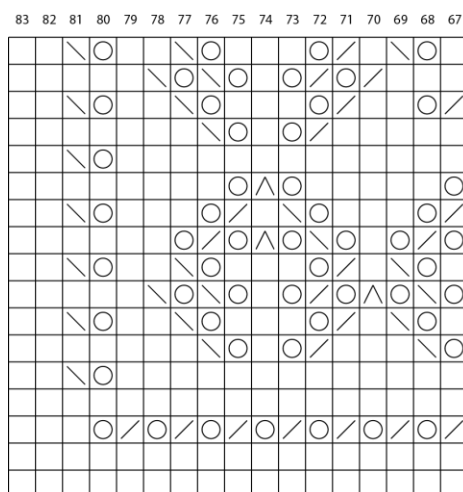
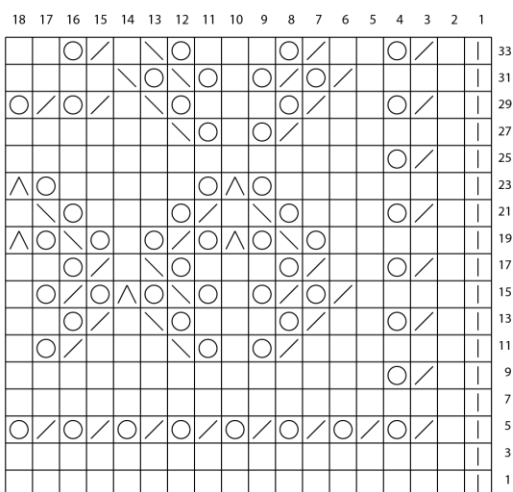
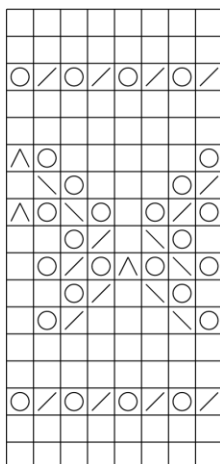


Chart 1 - Beginning Border:



6 stitch repeat



Legend:

	= k		= SI
	= k2tog		= SSK
	= SK2P		= YO

skacel collection, Inc.

Copyright © 2015 - All rights reserved.
www.skacelknitting.com

#21100157

10/16/15