



Toddler's Blank Slate Cardi

Designed by Karin Skacel for skacel collection, Inc.

Sizes And Materials:

One Size (12 Months)

Featured Yarn:

HiKoo® Cobasi Plus, 55% Cotton, 16% Bamboo, 8% Silk, 21% Elastic Nylon; 177 yds / 100g hank; MC: 2 hanks and CC 1 hank.

HiKoo® Kenzington, 60% New Zealand Merino, 25% Nylon, 10% Alpaca, 5% Silk Noils; 208 yds / 100g; One color: 2 hanks.

HiKoo® Simpliworsted, 55% Merino Superwash, 28% Acrylic, 17% Nylon; 140 yds / 100g; MC: 2 hanks and CC: 1 hank.

addi® Needles & Notions:

- addi® 6 mm (approx US 10) 24" circular or sizes needed to obtain gauge
- addi® 5.5 mm (approx US 9) 24" circular or sizes needed to obtain gauge
- Stitch holder
- Tapestry needle
- 10.5" double-ended zipper in a coordinating color

All yarn and needles distributed by
skacel collection, inc.

Gauge:

15 sts and 21 rows = 4" x 4" in St st.

To save time, check your gauge and read all instructions thoroughly before beginning.

skacel collection, inc.

Copyright© 2014 - All rights reserved.
www.skacelknitting.com

Pattern #21100613



Shown in order, from left to right:

- 1) Kenzington #1000 (Pavlova)
- 2) CoBaSi Plus #083 (Hot Pink) & #007 (Kiwi)
- 3) Simpliworsted #62 (Caramel Macchiato) & #12 (Iris Blue)
- 4) Simpliworsted #62 (Caramel Macchiato) & #22 (Blooming Rose)
- 5) Simpliworsted #35 (Turkish Coffee) & #03 (Natural)





Stitch Patterns

Seed Stitch: (over an uneven number of sts)

Row 1: K1, *k1, p1; repeat from * to last 2 sts, k1, sl1 wyif.

Repeat Row 1 for pattern.

Stockinette Stitch:

Knit all RS rows, and purl all WS rows.

Designer's Notes

- 1) Unless otherwise stated, place increases and decreases one stitch inside the edge stitch.
- 2) For easier seaming, maintain edge stitches throughout as: 'Knit the first stitch and, with yarn in front, slip the last stitch.' When sections are worked separately, create new edge sts.
- 3) Knitting to a larger gauge (more stitches per inch) will yield a smaller garment.
- 4) Charts are provided for duplicate stitching on finished garments.

Instructions

Right Sleeve:

With larger needles and MC, CO 27 sts.

Work 10 rows even in Seed st.

Work 4 rows even in St st.

Increases for Sleeve:

Row 15 (WS): Inc one stitch each edge, then every following 4th row 4x = 37 sts.

Decreases for Sleeve

Rows 32 & 33: BO 3 sts at beg of row, work in est pat to end of row.

Row 34 & 35: Work even in est pattern.

Row 36: On this and every following RS row, work a single stitch dec 3 sts from edge on each side of the piece 9x = 13 sts.

Cont to dec on left side only 2x more, but on last dec row, also BO 1 stitch at right edge for neck = 10 sts.

On following RS rows at neck edge BO 3 sts 2x, then 4 sts 1x = 0 sts.

Cut yarn.

Left Sleeve:

Work as for Right Sleeve, reversing all shaping.

Fronts and Back

Notes: The fronts and back of this piece are worked in one piece up to the armholes, at which point the work is divided and finished in three sections: Right Front, Back, and Left Front. This pattern gives instructions for working the vertical pocket at the same time that the three separate sections are worked. The separate sections can also be worked by working each section with its own ball of yarn (split the contrasting yarn into three balls; one ball consisting of 2/3 of the yarn, and the remaining two balls each consisting of 1/6 of the yarn). Or, eliminate the pocket holes altogether, and simply attach a decorative pocket placket at the end.

With larger needles and MC, CO 95 sts.

Work 10 rows in Seed st.

Work 4 rows in St st with MC, then 2 rows in St st with CC.

Create Pocket Holes

Row 17 (WS): Work St st across 12 sts only, keeping edge stitch on right and incorporating an edge st on left.

Work these 12 sts only in St st for 12 rows total. Leave 12 sts just worked on needle.

Cut the yarn and add it to the next section. Work in St st across the next 71 sts for 12 rows, creating edge stitches on each edge.

Cut the yarn and add it to the next section. Work the final 12 sts in St st as you worked the other sections, incorporating a new edge st.

Row 29 (WS): Working still with CC, join the three sections again, working across all 95 sts in St st.

Work 5 rows in CC in est pat.

Rows 35 - 37: Switch to MC and work 3 rows in est pat.

Splitting the Body

Note: Once separated, the two fronts and the back may be worked at the same time. However, instructions are given here for working each section separately.

Set Up for working each piece separately:

Row 38 (RS): Work across the first 25 sts in est pat (for Right Front), place the next 45 sts on a stitch holder or waste yarn for the Back, and place the remaining 25 sts on a stitch holder or waste yarn for the Left Front.

Right Front: (worked over 25 sts)

Raglan and Neck Shaping

Next Row (WS): BO 3 sts, then work across row in est pat.

Next Row (and all following RS rows): Work in est pat, dec 1 stitch, 3 sts from armhole edge 11x. At the same time, beginning on the same RS row as the 9th dec for armhole, BO 4 sts for neck edge, then on following RS rows, BO 3 sts once, then 2 sts 2x = 0 sts.

Cut yarn.

Back: (worked over 45 sts)

Shape for Raglan

Move the 45 sts on hold for Back to working needle. Add yarn for working a RS row and BO 3 sts, work to end of row in est pat.

Next Row (WS): BO 3 sts, work to end of row in est pat.

Next Row (and every following RS row): Dec 1 stitch, 3 sts from edge, on EACH side 11x = 17 sts.



skacel collection, inc.

Copyright© 2014 - All rights reserved.

www.skacelknitting.com

Pattern #21100613

On row following last dec, purl across 7 sts, p2tog, then purl across remaining 8 sts.

Bind off all 16 sts.

Left Front: (worked over 25 sts)

Work as for Right Front, reversing all shaping.

Finishing

Piece the raglan sleeves together with the body. This can be done very nicely from the RIGHT side of the work. Your edge stitches should curl in nicely, and you can either use a mattress stitch or an invisible horizontal seam.

Instructions for these can be found at: www.knitpurlhunter.com.

Designer's Finishing Tricks

- Weave in all the yarn ends. I'm one of those rare knitters who believe in knots. In the case of this small jacket, where it will most likely be machine washed and dried, I especially believe in knots. I try to knot my ends, and then hide them in the edge stitches by weaving them in. Machine washing items can cause a lot of agitation, and ends that have been snipped too short and then woven in can come undone in the wash. Thus I triple knot, then weave.
- If you prefer, you can create actual pockets using pieces of felt that coordinate with the color of your yarn.
- You can also use a nice decorative ribbon to hide the zipper on the inside.

Collar

Note: Maintain the edge sts for a smooth edge to the collar.

With smaller circular needle and MC, and with the right side of the work facing you, PUK 15 sts from the Right Front neck to the first right raglan seam, then 11 sts across the Sleeve, 11 sts across the Back, 11 sts across the next Sleeve to the sleeve seam, then a final 15 sts to the Left center = 63 sts.

Next Row (WS): Purl.

Work 2 rows in St st.

Work 12 rows in Seed st.

BO loosely so Collar will lay flat.

Pocket Flaps:

Using larger needles and MC, and with the right side of front facing you, pick up 13 sts vertically in the 10th column of stitches from the front edge starting one row above where the CC color begins and picking up one stitch per row.

Note: When picking up sts, remember that the flaps should be knit TOWARD the side seam.

Work these 13 sts in Seed st, using edge sts, for 6 rows.

Bind off all sts loosely. Sew down the edges of the pocket flaps.

Sew the two sides of the zipper to the Left and Right Fronts.

Duplicate Stitch

1. Do the same thing for the next stitch. Start at its bottom point, sew through the stitch above it, and back down to your starting place.
2. To duplicate vertically adjacent stitches, sew under both the original stitch and the duplicate stitch.
3. Repeat for all stitches that need to be duplicated.

4. Using a blunt tapestry needle and a contrasting color or yarn, bring the needle from the back of the work to the front through the bottom point of the stitch (or "V") to be duplicated (leave several inches of yarn tail in the back to weave in at the end).
5. Thread the needle behind the two legs of the stitch ABOVE the one you are duplicating.
6. Insert the needle back into the bottom of the "V", the same place where you began = one stitch duplicated!

Abbreviations

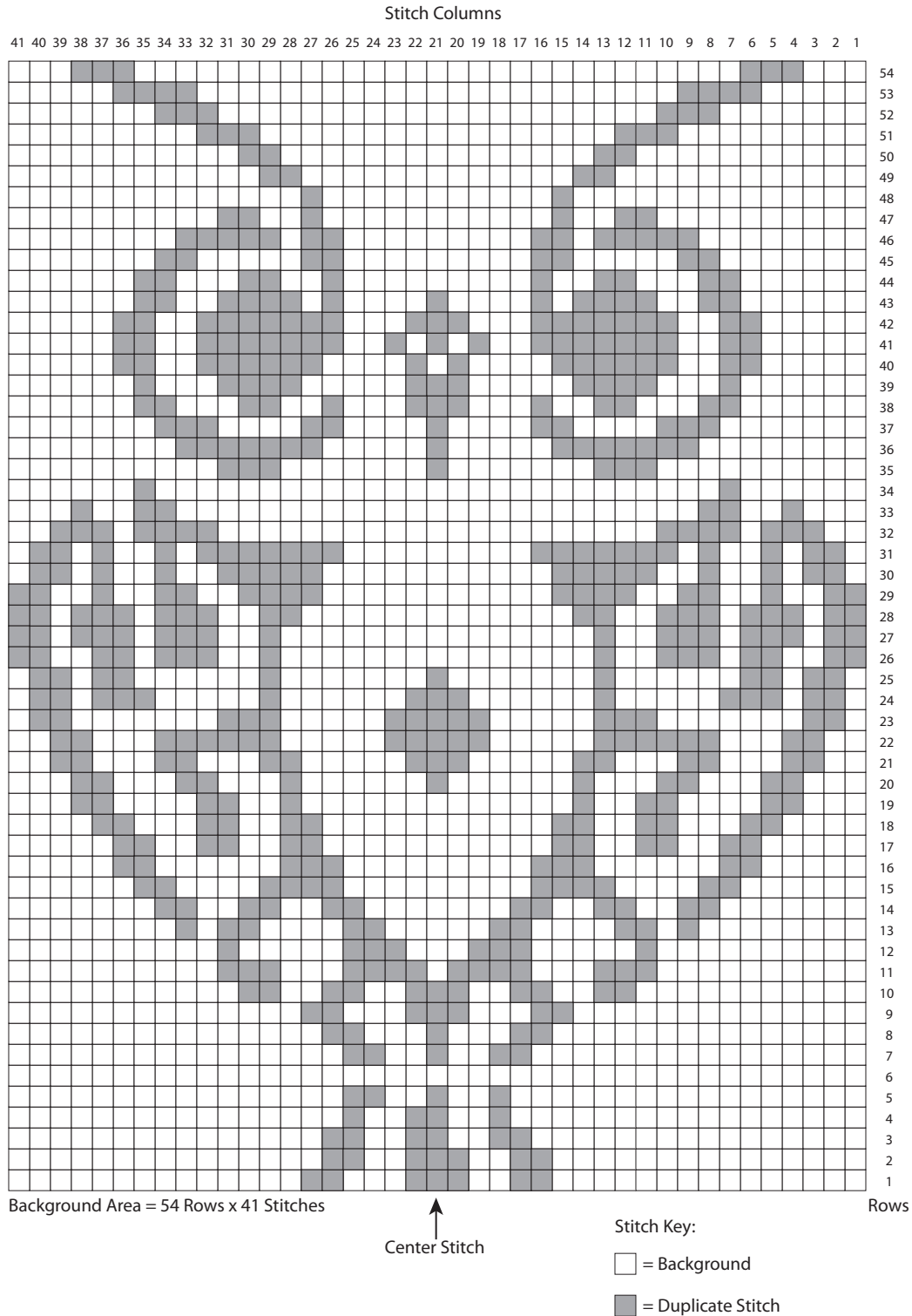
BO	Bind Off
CC	Contrasting Color
CO	Cast On
k	knit
MC	Main Color
p	purl
p2tog	purl two stitches together (decreases one stitch)
PUK	Pick Up and Knit
sl1	slip one stitch purlwise
st(s)	stitch(es)
wyif	with yarn in front x times



skacel collection, inc.
Copyright© 2014 - All rights reserved.
www.skacelknitting.com

Pattern #21100613

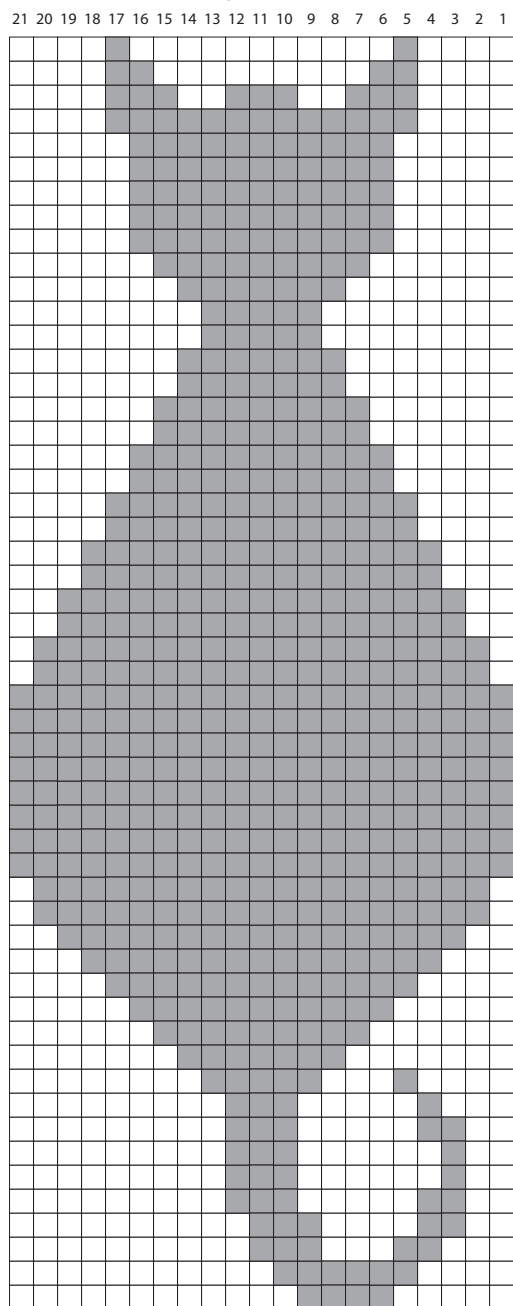
Colorwork Charts



skacel collection, inc.
Copyright© 2014 - All rights reserved.
www.skacelknitting.com
Pattern #21100613

Colorwork Charts

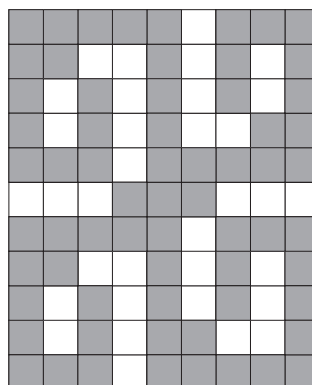
Chart is 21 wide x 53 tall
Each Square = 1 Stitch



Center Stitch

Stitch Columns

9 8 7 6 5 4 3 2 1





Rows

Center Stitch

Duplicate Stitch Area Needed
11 Rows x 9 Stitches

Stitch Key:

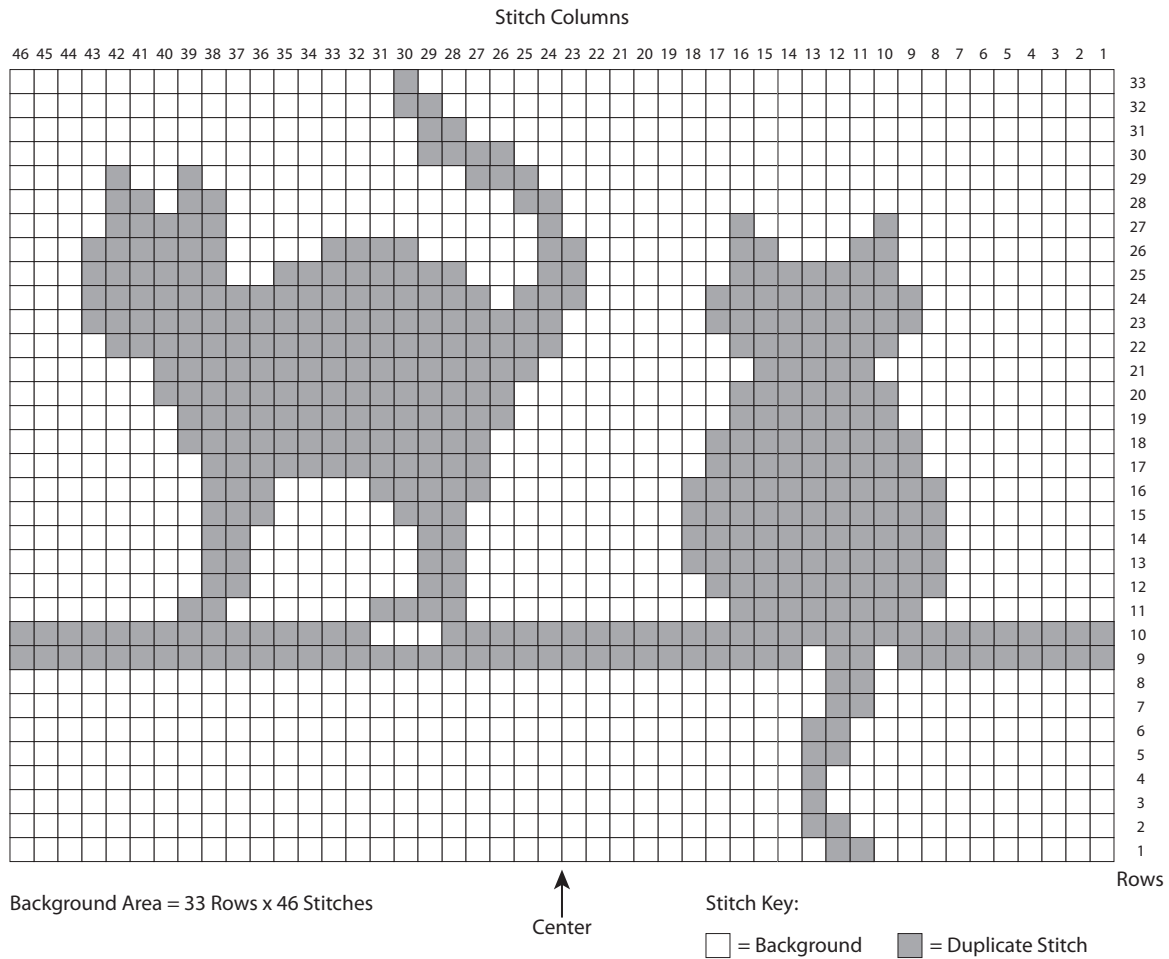
-  = Background
-  = Duplicate Stitch



skacel collection, inc.
Copyright© 2014 - All rights reserved.
www.skacelknitting.com

Pattern #21100613

Colorwork Charts

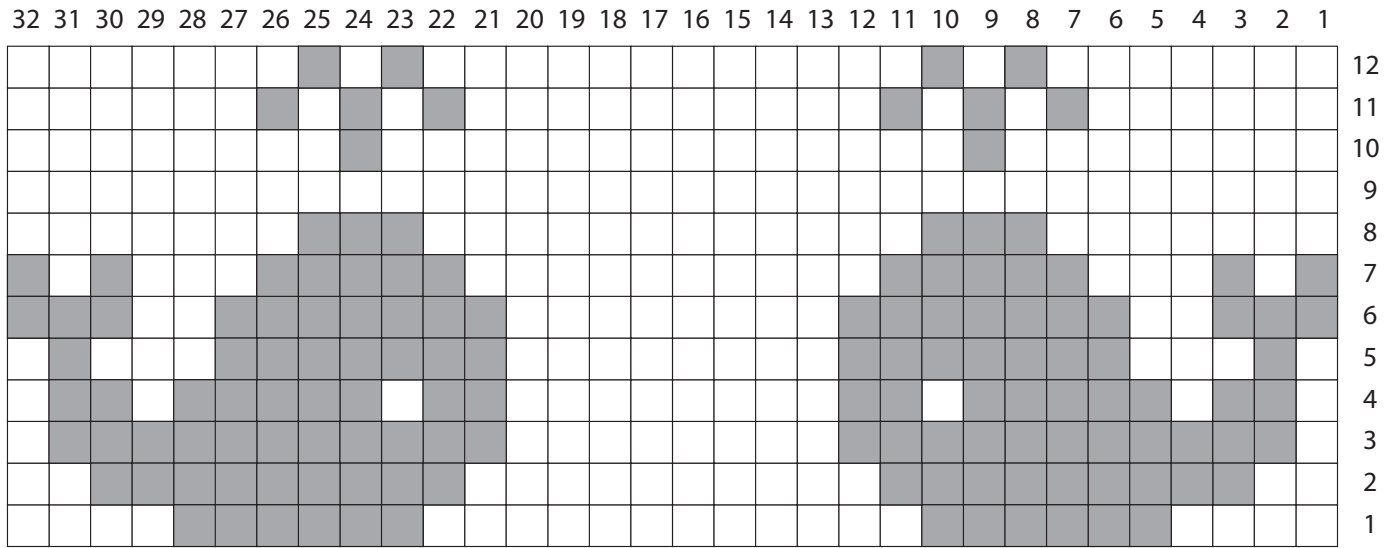


skacel collection, inc.
 Copyright© 2014 - All rights reserved.
www.skacelknitting.com
 Pattern #21100613

Colorwork Charts

Chart is 32 wide x 12 tall

Each Square = 1 Stitch



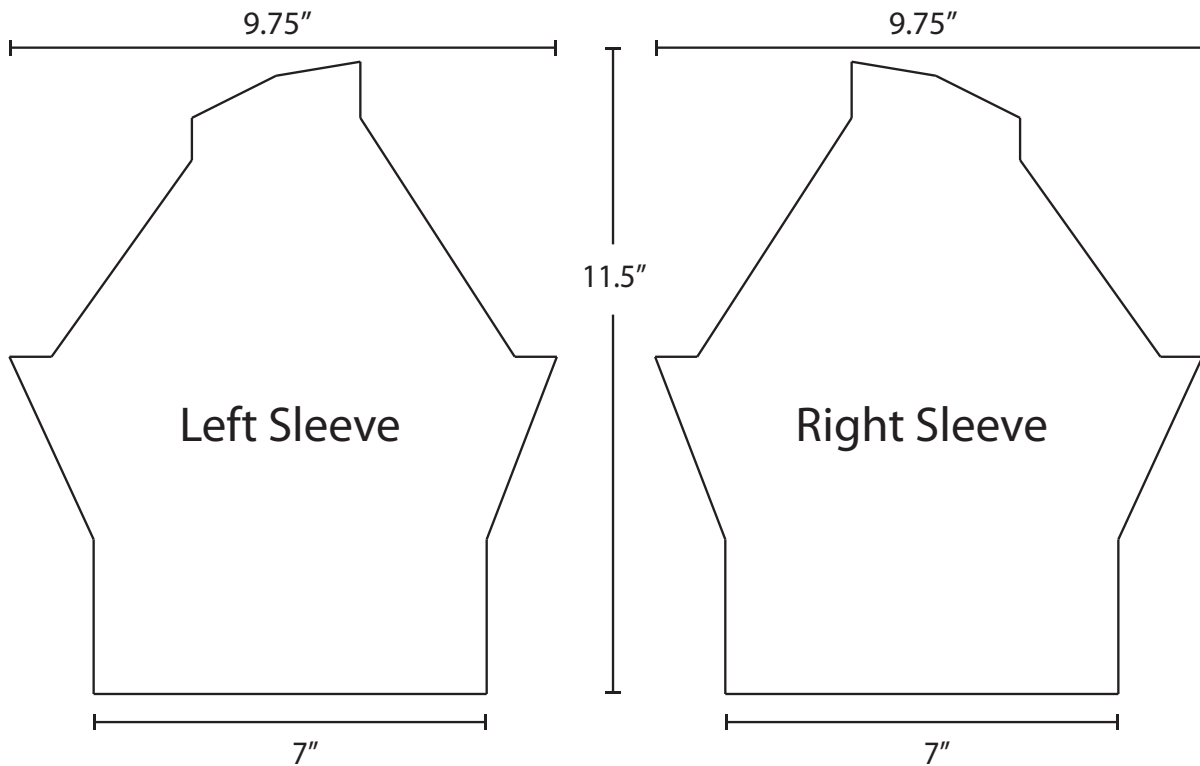
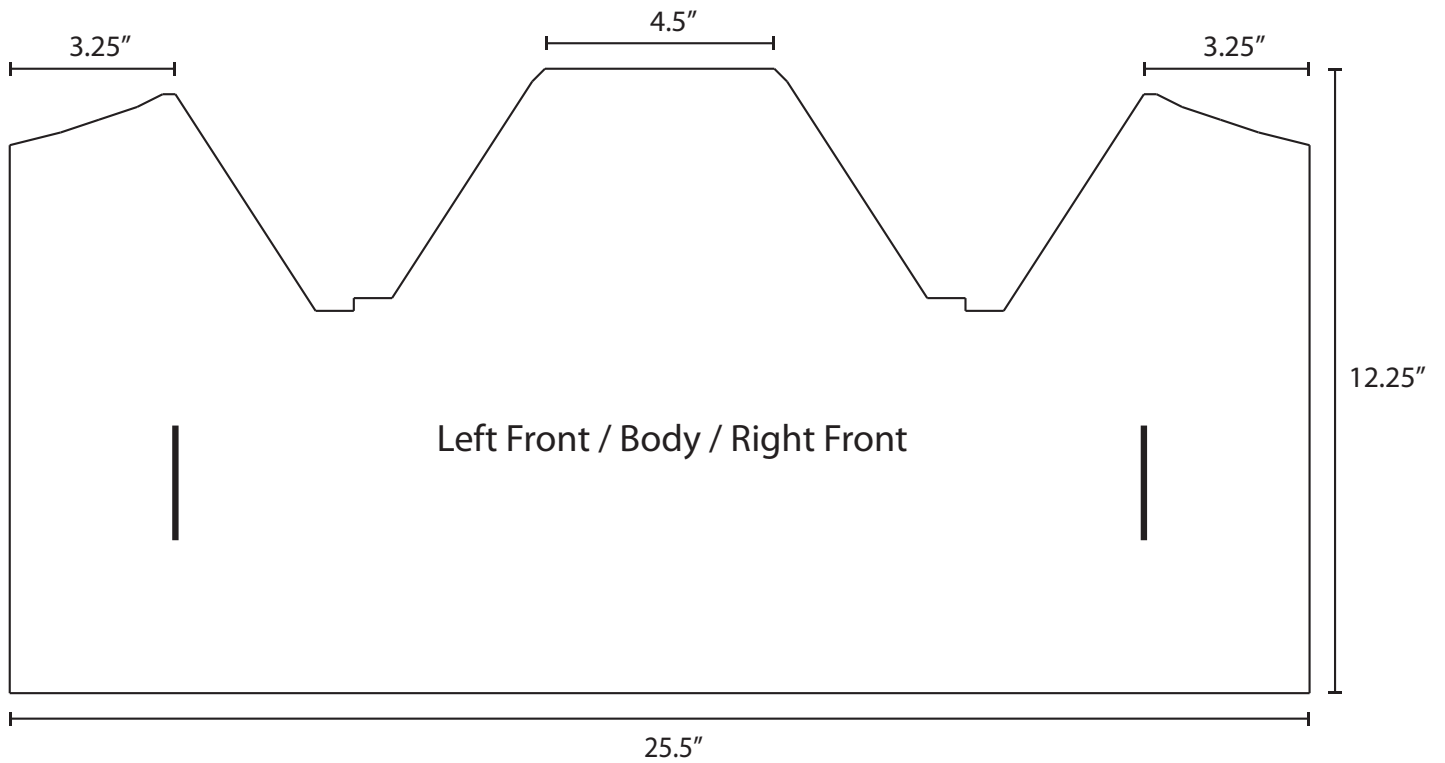
↑
Center



skacel collection, inc.
Copyright© 2014 - All rights reserved.
www.skacelknitting.com

Pattern #21100613

Schematic



skacel collection, inc.
Copyright© 2014 - All rights reserved.
www.skacelknitting.com
Pattern #21100613